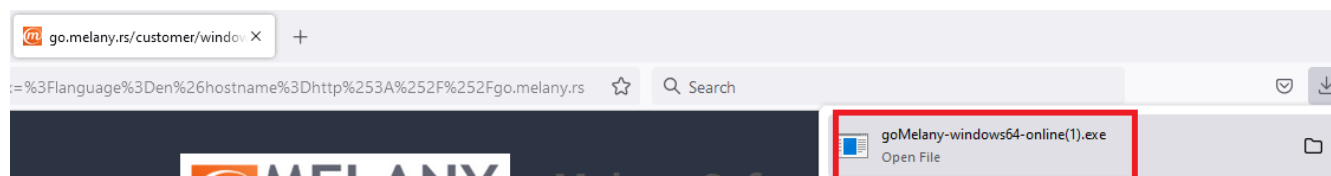
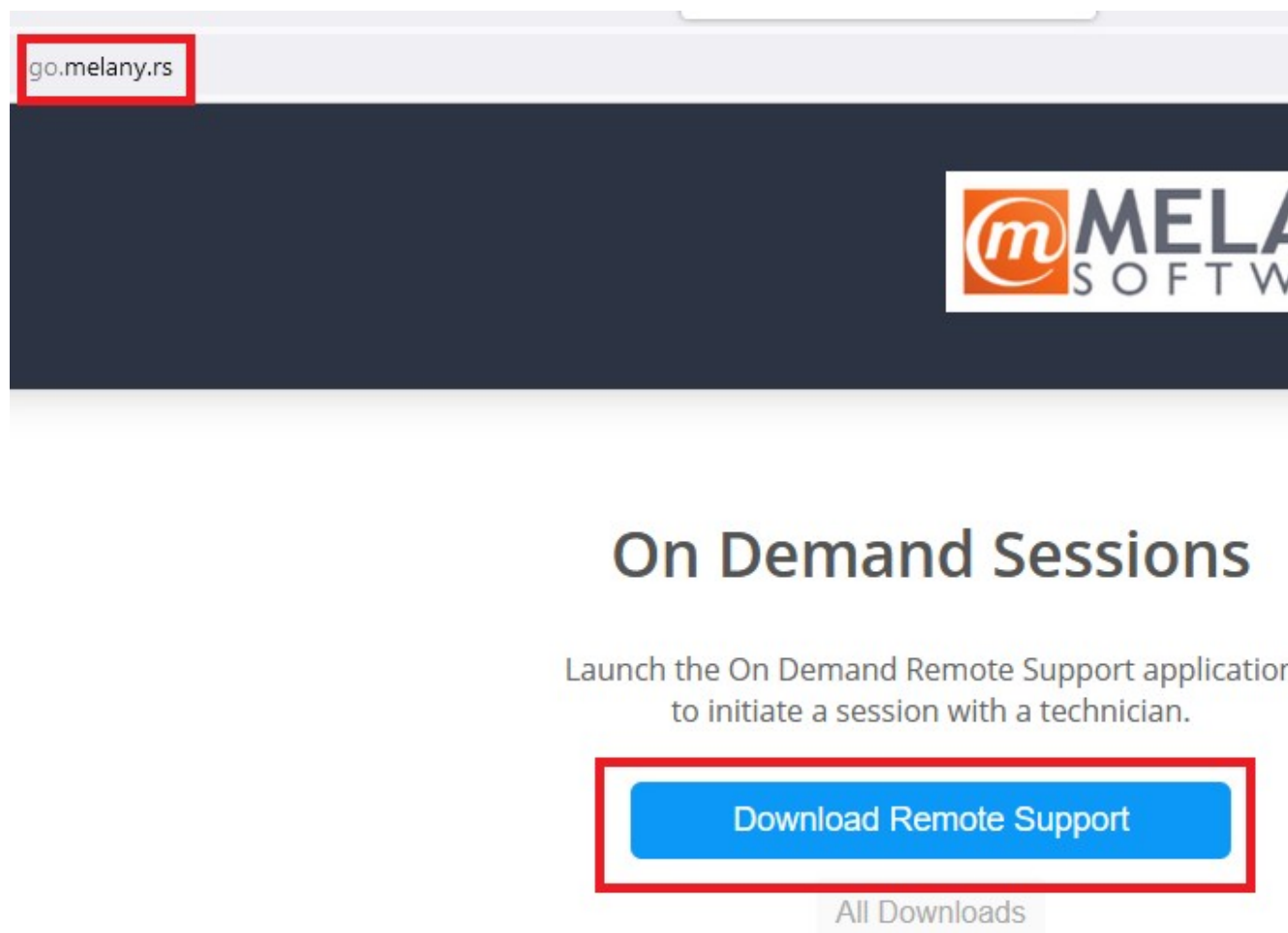


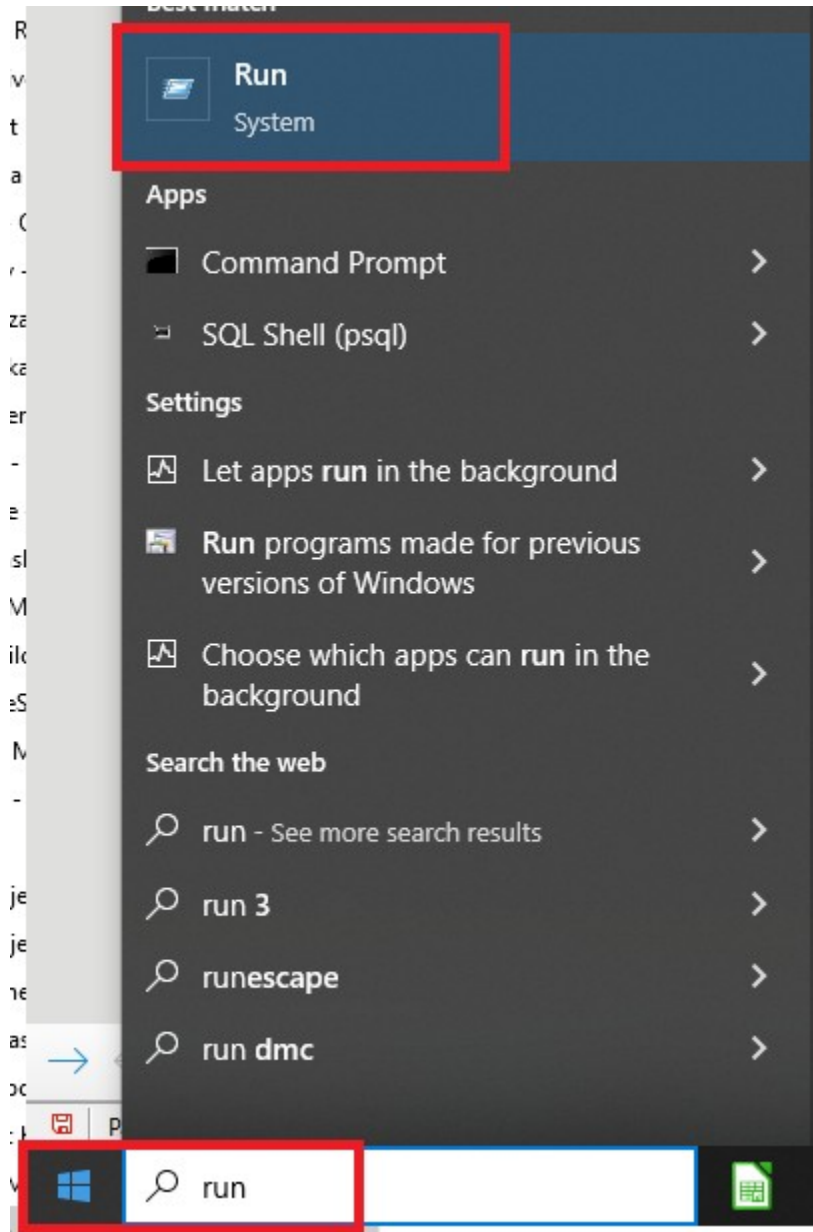
## “Popravka” u slučaju nemogućnosti pokretanja go.melany.rs

Kada otvarate privremeni pristup na Simple Help-u (go.melany.rs), može da se desi se da duplim klikom na skinuti fajl ne dogodi ništa.

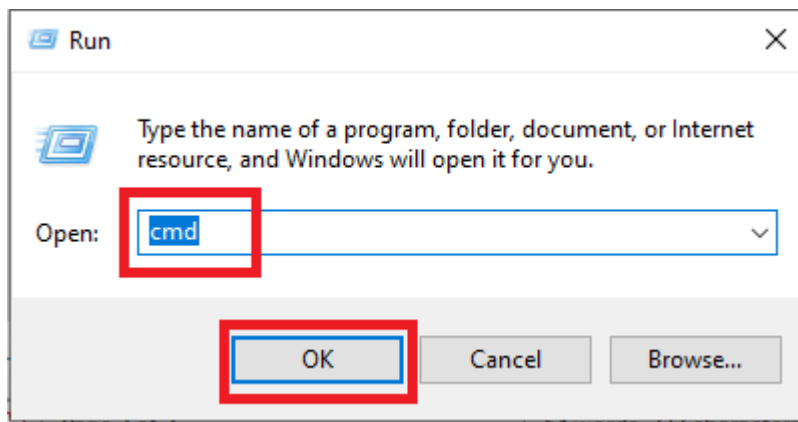


U tom slučaju:

1. Kliknete na Start i ukucate “Run”



Kliknete na "Run" ikonicu i dobijete prompt gde ukucate "cmd i kliknete na OK:



2. Kada se pojavi prozor kopirajte sledeću komandu **rmdir /S "%AppData%/JWrapper-Remote Support"** i kliknite na Enter.

```
Command Prompt
Microsoft Windows [Version 10.0.19045.4412]
(c) Microsoft Corporation. All rights reserved.

C:\Users\ljubisa>rmdir /S "%AppData%/JWrapper-Remote Support"
```

Kada se pojavi novi red, ukucajte Y i kliknite na Enter

```
Command Prompt
Microsoft Windows [Version 10.0.19045.4412]
(c) Microsoft Corporation. All rights reserved.

C:\Users\ljubisa>rmdir /S "%AppData%/JWrapper-Remote Support"
C:\Users\ljubisa\AppData\Roaming\JWrapper-Remote Support, Are you sure (Y/N): Y
```

Kada se pojavi novi red, operacija je završena i možete da pokrenete goMelany aplikaciju.

```
Command Prompt
Microsoft Windows [Version 10.0.19045.4412]
(c) Microsoft Corporation. All rights reserved.

C:\Users\ljubisa>rmdir /S "%AppData%/JWrapper-Remote Support"
C:\Users\ljubisa\AppData\Roaming\JWrapper-Remote Support, Are you sure (Y/N)? Y
C:\Users\ljubisa>
```